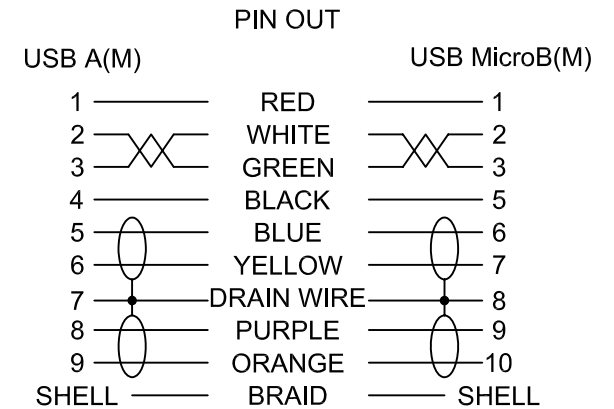
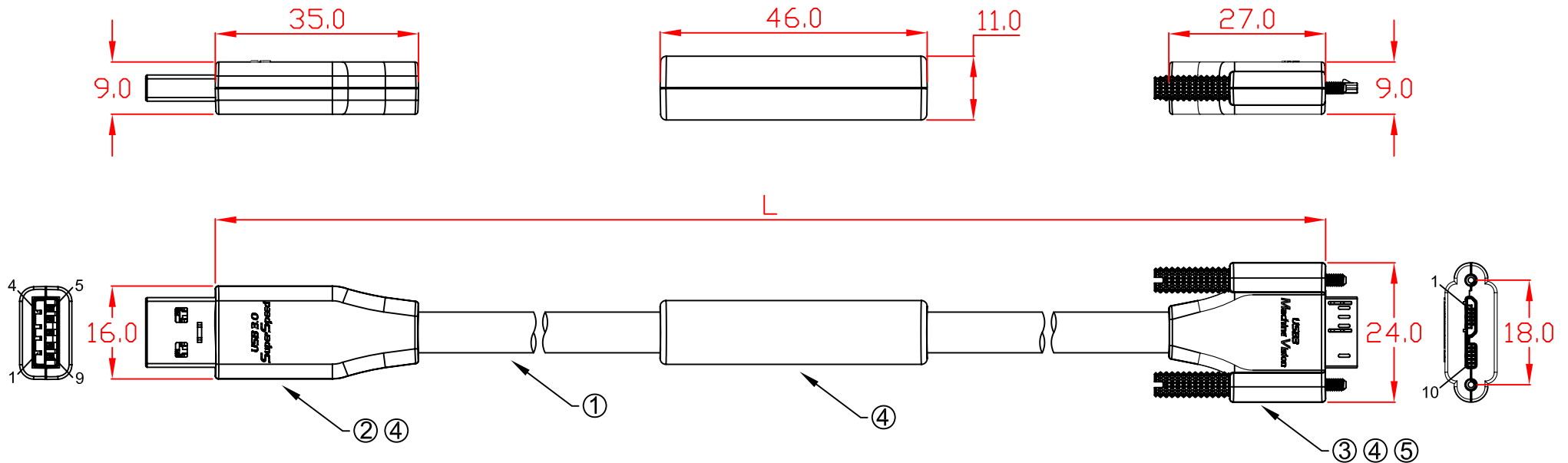


L:
 CBL-HFPD3igMBS-1m 1000mm±20mm
 CBL-HFPD3igMBS-2m 2000mm±20mm
 CBL-HFPD3igMBS-3m 3000mm±20mm



No	MATERIALS LIST:
1.	CABLE:UL20236 (2x(2x28AWG)+2x(2x28AWG)C) OD:7.0mm PUR JACKET COLOR:RED LILAC
2.	CONNECTOR:USB 3.0 A/M, 9P, BLUE INSULATOR SOLDER TYPE, NICKEL PLATED SHELL
3.	CONNECTOR:USB 3.0 MicroB/M, 10P, BLACK INSULATOR SOLDER TYPE, NICKEL PLATED SHELL
4.	ABS ASSEMBLY HOUSING, BLACK COLOR
5.	SCREW:#4x33 M2

Jargy part no.	Client part no.	Approved	SCALE	UNIT
CBL-HFPD3igMBS-xm			1 : 1	mm
Drawing Name		Drawn	Date	REV.
USB 3.0 A to Micro-B Cable M/M		<i>Kevin Hsu</i>	2016/06/02	1.0

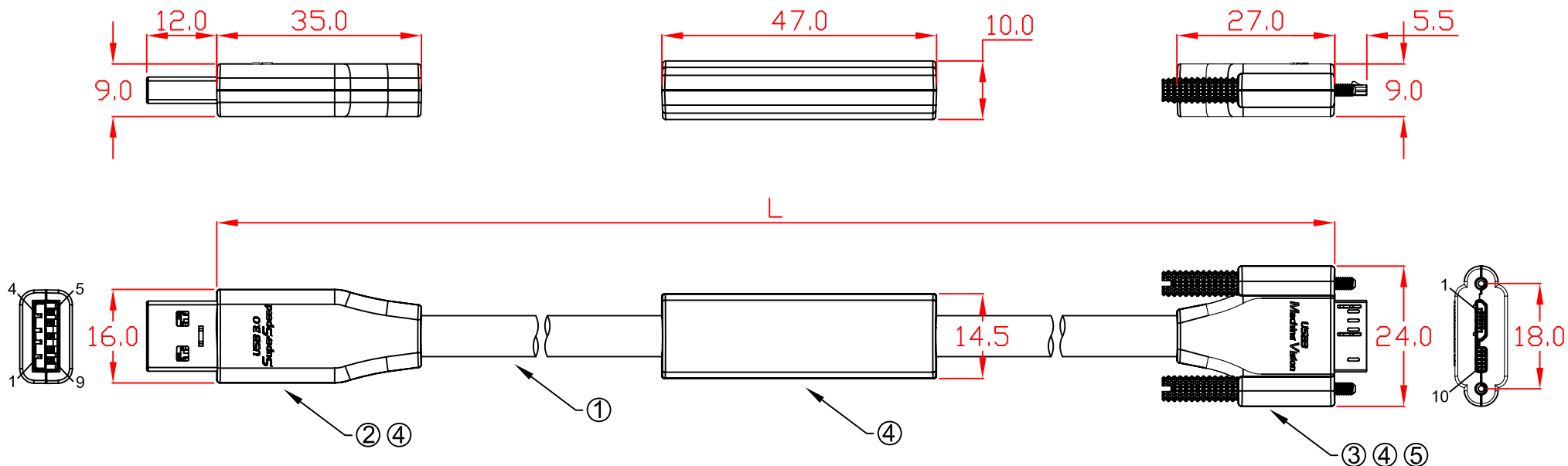


L:
 CBL-HFD3igMBS-4m 4000mm±30mm
 CBL-HFD3igMBS-5m 5000mm±30mm
 CBL-HFD3igMBS-6m 6000mm±30mm
 CBL-HFD3igMBS-7m 7000mm±30mm

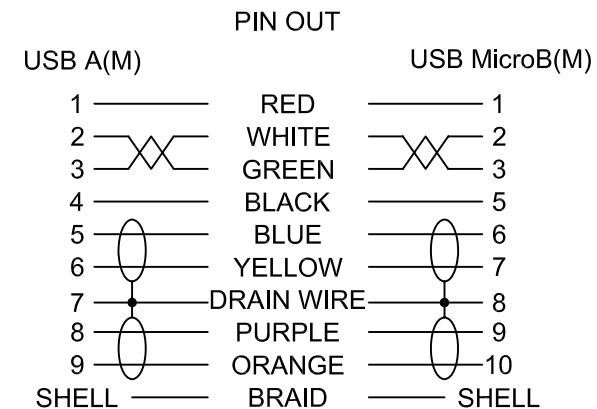
PIN OUT	
USB A(M)	USB MicroB(M)
1 ——— RED	1 ——— 1
2 ——— WHITE	2 ——— 2
3 ——— GREEN	3 ——— 3
4 ——— BLACK	5 ——— 5
5 ——— BLUE	6 ——— 6
6 ——— YELLOW	7 ——— 7
7 ——— DRAIN WIRE	8 ——— 8
8 ——— PURPLE	9 ——— 9
9 ——— ORANGE	10 ——— 10
SHELL ——— BRAID	——— SHELL

No	MATERIALS LIST:
1.	CABLE:UL20236 (2x(2x28AWG)+2x(2x28AWG)C) OD:7.0mm PUR JACKET COLOR:RED LILAC
2.	CONNECTOR:USB 3.0 A/M, 9P, BLUE INSULATOR SOLDER TYPE, NICKEL PLATED SHELL
3.	CONNECTOR:USB 3.0 MicroB/M, 10P, BLACK INSULATOR SOLDER TYPE, NICKEL PLATED SHELL
4.	ABS ASSEMBLY HOUSING, BLACK COLOR
5.	SCREW:#4x33 M2

Jargy part no.	Client part no.	Approved	SCALE	UNIT
CBL-HFD3igMBS-xm			1 : 1	mm
Drawing Name		Drawn	Date	REV.
USB 3.0 A to Micro-B Cable M/M		<i>Kevin Hsu</i>	2016/06/02	1.0

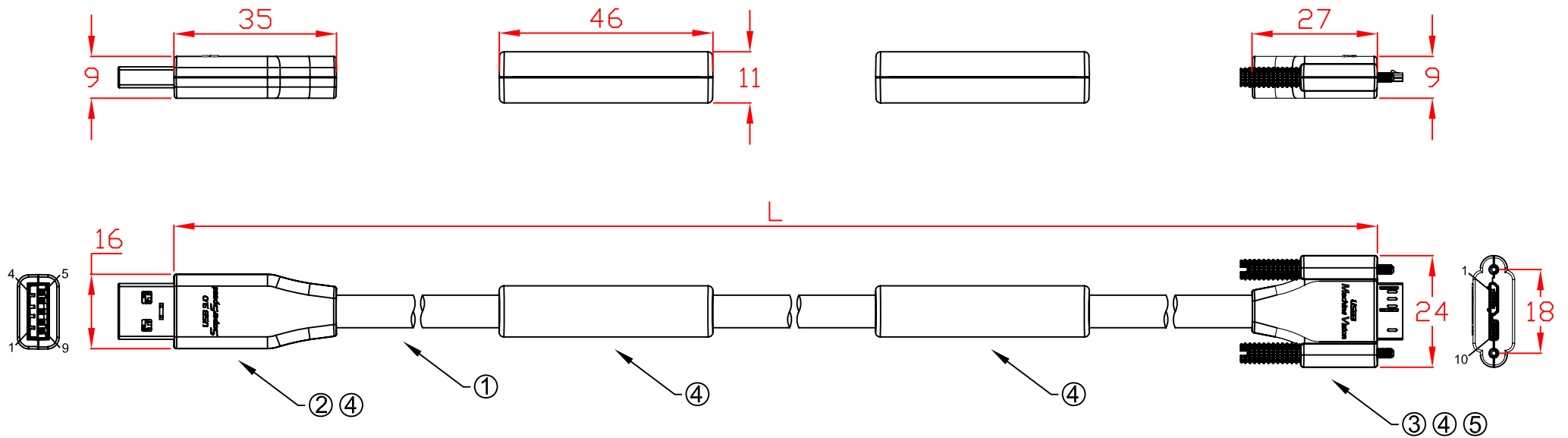


L:
 CBL-HFD3igMBS-4m 4000mm±30mm
 CBL-HFD3igMBS-5m 5000mm±30mm
 CBL-HFD3igMBS-6m 6000mm±30mm
 CBL-HFD3igMBS-7m 7000mm±30mm



No	MATERIALS LIST:
1.	CABLE:UL20236 (2x(2x28AWG)+2x(2x28AWG)C) OD:7.0mm PUR JACKET COLOR:RED LILAC
2.	CONNECTOR:USB 3.0 A/M, 9P, BLUE INSULATOR SOLDER TYPE, NICKEL PLATED SHELL
3.	CONNECTOR:USB 3.0 MicroB/M, 10P, BLACK INSULATOR SOLDER TYPE, NICKEL PLATED SHELL
4.	ABS ASSEMBLY HOUSING, BLACK COLOR
5.	SCREW:#4x33 M2

Jargy part no.	Client part no.	Approved	SCALE	UNIT
CBL-HFD3igMBS-xm			1 : 1	mm
Drawing Name		Drawn	Date	REV.
USB 3.0 A to Micro-B Cable M/M		<i>Kevin Hsu</i>	2016/08/17	1.0

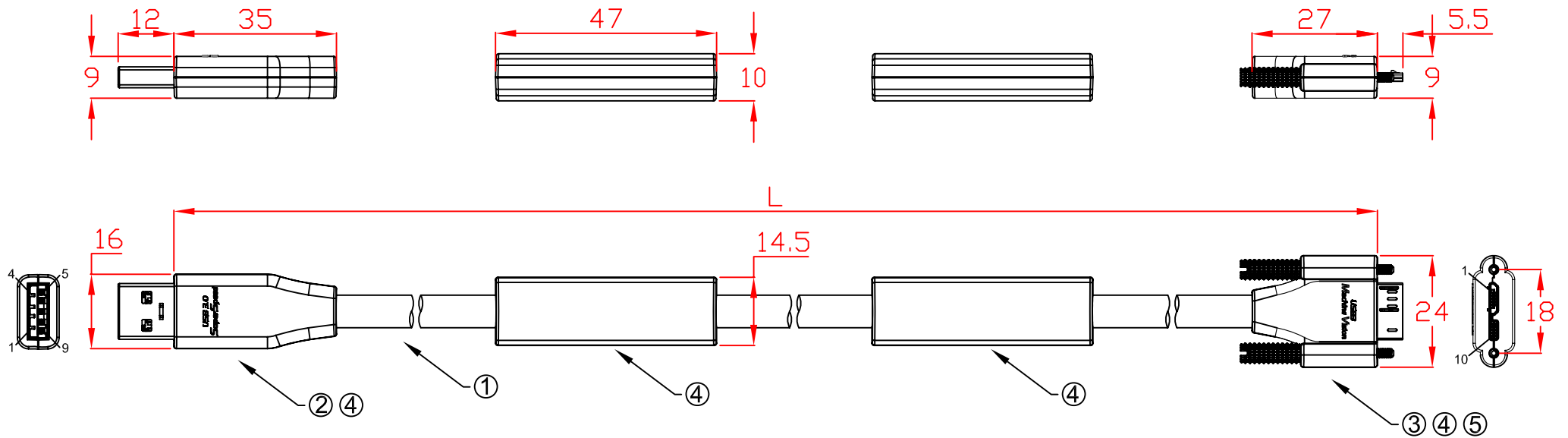


L:
 CBL-HFD3igMBS-8m 8000mm±50mm
 CBL-HFD3igMBS-9m 9000mm±50mm

PIN OUT	
USB A(M)	USB MicroB(M)
1 ———	RED ——— 1
2 ———	WHITE ——— 2
3 ———	GREEN ——— 3
4 ———	BLACK ——— 5
5 ———	BLUE ——— 6
6 ———	YELLOW ——— 7
7 ———	DRAIN WIRE ——— 8
8 ———	PURPLE ——— 9
9 ———	ORANGE ——— 10
SHELL ———	BRAID ——— SHELL

No	MATERIALS LIST:
1.	CABLE:UL20236 (2x(2x28AWG)+2x(2x28AWG)C) OD:7.0mm PUR JACKET COLOR:RED LILAC
2.	CONNECTOR:USB 3.0 A/M, 9P, BLUE INSULATOR SOLDER TYPE, NICKEL PLATED SHELL
3.	CONNECTOR:USB 3.0 MicroB/M, 10P, BLACK INSULATOR SOLDER TYPE, NICKEL PLATED SHELL
4.	ABS ASSEMBLY HOUSING, BLACK COLOR
5.	SCREW:#4x33 M2

Jargy part no.	Client part no.	Approved	SCALE	UNIT
CBL-HFD3igMBS-xm			1 : 2	mm
Drawing Name		Drawn	Date	REV.
USB 3.0 A to Micro-B Cable M/M		<i>Kevin Hsu</i>	2016/06/01	1.0

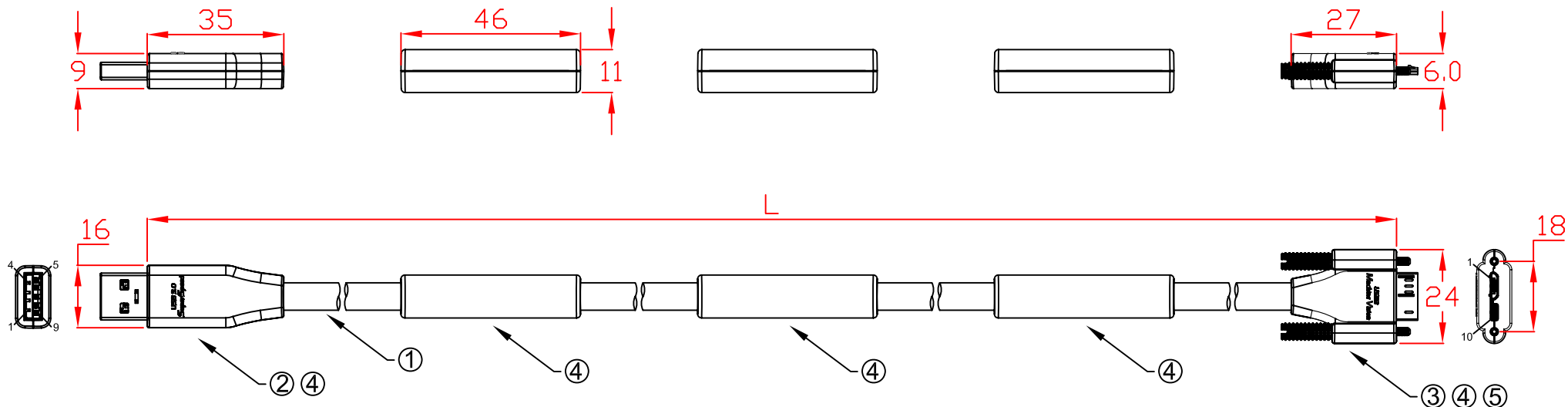


L:
 CBL-HFD3igMBS-8m 8000mm±50mm
 CBL-HFD3igMBS-9m 9000mm±50mm

USB A(M)		PIN OUT	USB MicroB(M)	
1	—	RED	—	1
2	—	WHITE	—	2
3	—	GREEN	—	3
4	—	BLACK	—	5
5	—	BLUE	—	6
6	—	YELLOW	—	7
7	—	DRAIN WIRE	—	8
8	—	PURPLE	—	9
9	—	ORANGE	—	10
SHELL	—	BRAID	—	SHELL

No	MATERIALS LIST:
1.	CABLE:UL20236 (2x(2x28AWG)+2x(2x28AWG)C) OD:7.0mm PUR JACKET COLOR:RED LILAC
2.	CONNECTOR:USB 3.0 A/M, 9P, BLUE INSULATOR SOLDER TYPE, NICKEL PLATED SHELL
3.	CONNECTOR:USB 3.0 MicroB/M, 10P, BLACK INSULATOR SOLDER TYPE, NICKEL PLATED SHELL
4.	ABS ASSEMBLY HOUSING, BLACK COLOR
5.	SCREW:#4x33 M2

Jargy part no.	Client part no.	Approved	SCALE	UNIT
CBL-HFD3igMBS-xm			1 : 2	mm
Drawing Name		Drawn	Date	REV.
USB 3.0 A to Micro-B Cable M/M		<i>Kevin Hsu</i>	2016/08/17	1.0

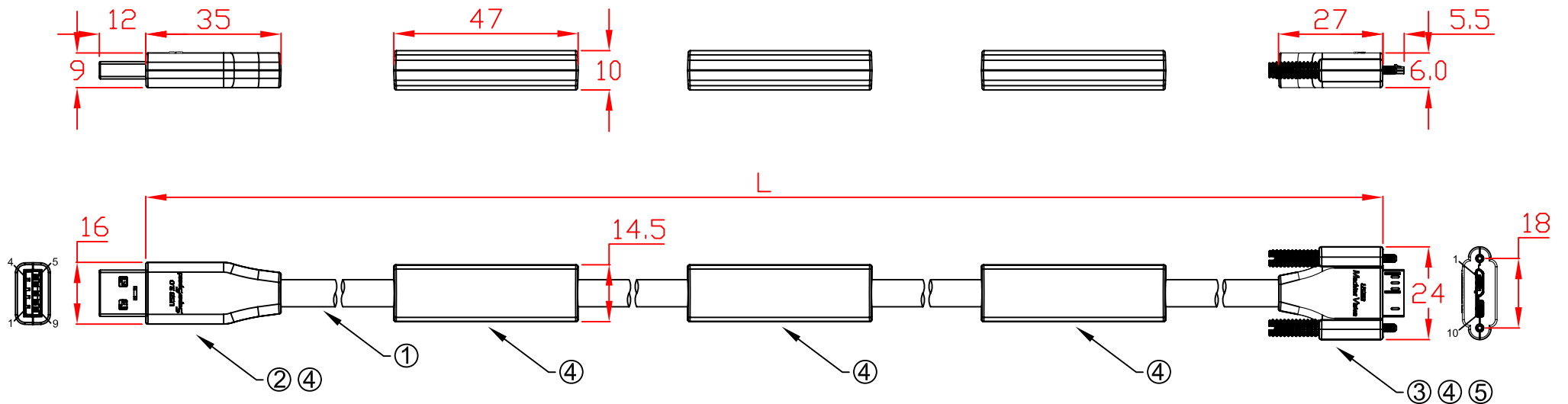


L:
 CBL-HFD3igMBS-10m 10000mm±50mm
 CBL-HFD3igMBS-11m 11000mm±50mm
 CBL-HFD3igMBS-12m 12000mm±50mm

No	MATERIALS LIST:
1.	CABLE:UL20236 (2x(2x28AWG)+2x(2x28AWG)C) OD:7.0mm PUR JACKET COLOR:RED LILAC
2.	CONNECTOR:USB 3.0 A/M, 9P, BLUE INSULATOR SOLDER TYPE, NICKEL PLATED SHELL
3.	CONNECTOR:USB 3.0 MicroB/M, 10P, BLACK INSULATOR SOLDER TYPE, NICKEL PLATED SHELL
4.	ABS ASSEMBLY HOUSING, BLACK COLOR
5.	SCREW:#4x33 M2

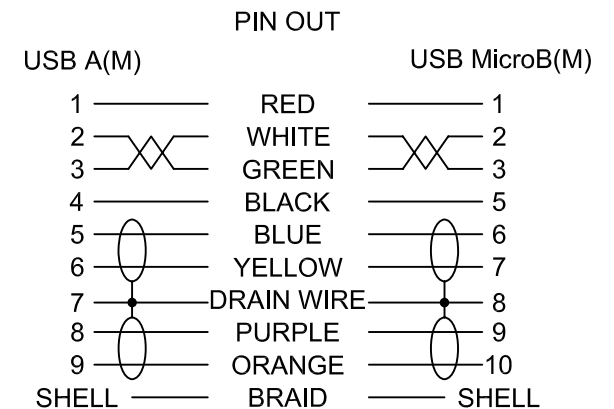
PIN OUT		
USB A(M)		USB MicroB(M)
1 ———	RED	1 ———
2 ———	WHITE	2 ———
3 ———	GREEN	3 ———
4 ———	BLACK	5 ———
5 ———	BLUE	6 ———
6 ———	YELLOW	7 ———
7 ———	DRAIN WIRE	8 ———
8 ———	PURPLE	9 ———
9 ———	ORANGE	10 ———
SHELL ———	BRAID	SHELL ———

Jargy part no.	Client part no.	Approved	SCALE	UNIT
CBL-HFD3igMBS-xm			1 : 2	mm
Drawing Name		Drawn	Date	REV.
USB 3.0 A to Micro-B Cable M/M		<i>Kevin Hsu</i>	2016/06/02	1.0

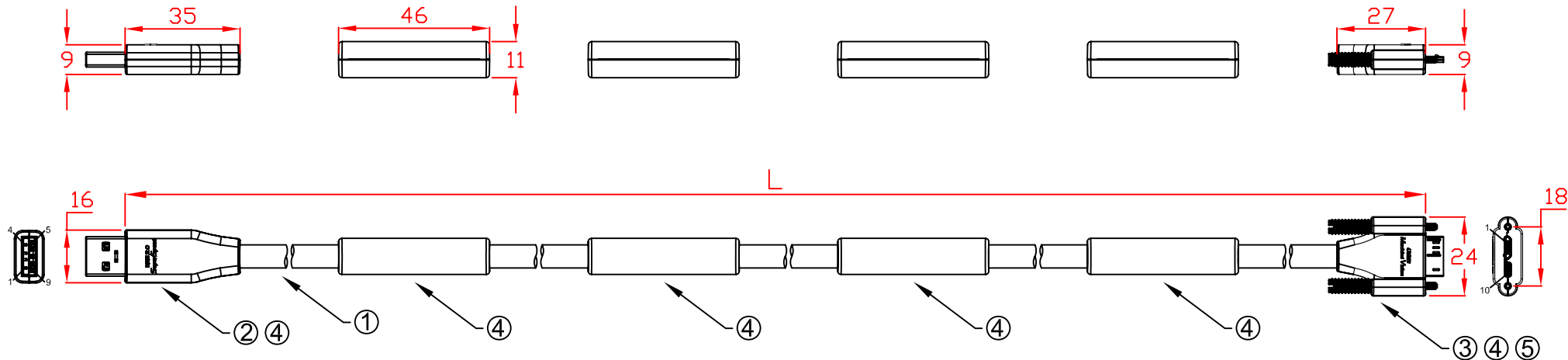


L:
 CBL-HFD3igMBS-10m 10000mm±50mm
 CBL-HFD3igMBS-11m 11000mm±50mm
 CBL-HFD3igMBS-12m 12000mm±50mm

No	MATERIALS LIST:
1.	CABLE:UL20236 (2x(2x28AWG)+2x(2x28AWG)C) OD:7.0mm PUR JACKET COLOR:RED LILAC
2.	CONNECTOR:USB 3.0 A/M, 9P, BLUE INSULATOR SOLDER TYPE, NICKEL PLATED SHELL
3.	CONNECTOR:USB 3.0 MicroB/M, 10P, BLACK INSULATOR SOLDER TYPE, NICKEL PLATED SHELL
4.	ABS ASSEMBLY HOUSING, BLACK COLOR
5.	SCREW:#4x33 M2



Jargy part no.	Client part no.	Approved	SCALE	UNIT
CBL-HFD3igMBS-xm			1 : 2	mm
Drawing Name		Drawn	Date	REV.
USB 3.0 A to Micro-B Cable M/M		<i>Kevin Hsu</i>	2016/08/17	1.0

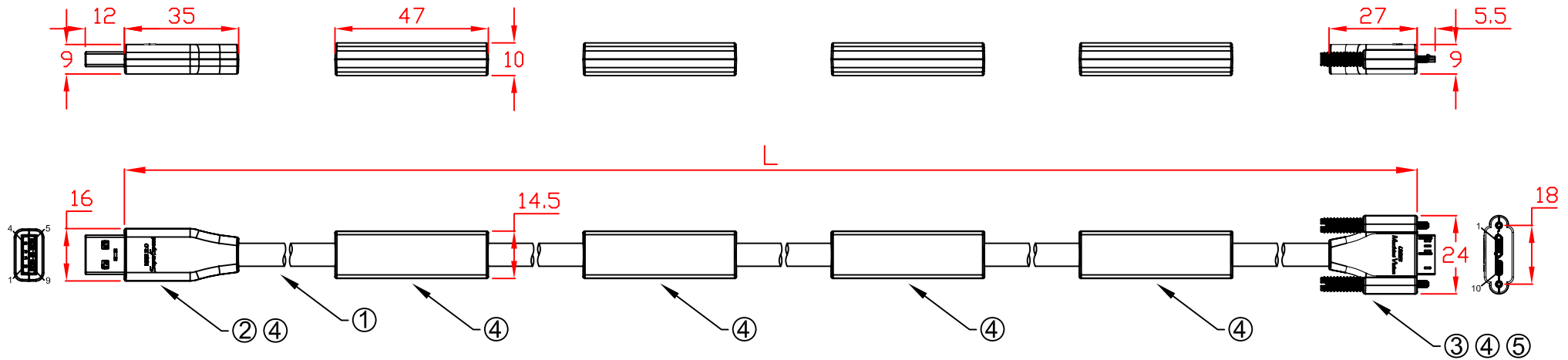


L:
 CBL-HFD3igMBS-13m 13000mm±50mm
 CBL-HFD3igMBS-14m 14000mm±50mm
 CBL-HFD3igMBS-15m 15000mm±50mm

PIN OUT	
USB A(M)	USB MicroB(M)
1 ———	RED ——— 1
2 ———	WHITE ——— 2
3 ———	GREEN ——— 3
4 ———	BLACK ——— 5
5 ———	BLUE ——— 6
6 ———	YELLOW ——— 7
7 ———	DRAIN WIRE ——— 8
8 ———	PURPLE ——— 9
9 ———	ORANGE ——— 10
SHELL ———	BRAID ——— SHELL

No	MATERIALS LIST:
1.	CABLE:UL20236 (2x(2x28AWG)+2x(2x28AWG)C) OD:7.0mm PUR JACKET COLOR:RED LILAC
2.	CONNECTOR:USB 3.0 A/M, 9P, BLUE INSULATOR SOLDER TYPE, NICKEL PLATED SHELL
3.	CONNECTOR:USB 3.0 MicroB/M, 10P, BLACK INSULATOR SOLDER TYPE, NICKEL PLATED SHELL
4.	ABS ASSEMBLY HOUSING, BLACK COLOR
5.	SCREW:#4x33 M2

Jargy part no.	Client part no.	Approved	SCALE	UNIT
CBL-HFD3igMBS-xm			1 : 2	mm
Drawing Name		Drawn	Date	REV.
USB 3.0 A to Micro-B Cable M/M		<i>Kevin Hsu</i>	2016/06/02	1.0

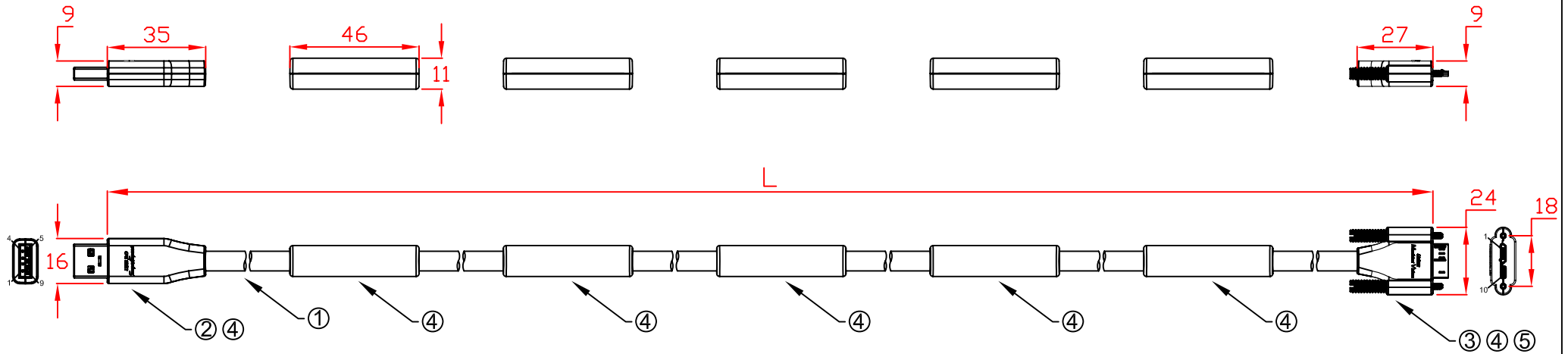


L:
 CBL-HFD3igMBS-13m 13000mm±50mm
 CBL-HFD3igMBS-14m 14000mm±50mm
 CBL-HFD3igMBS-15m 15000mm±50mm

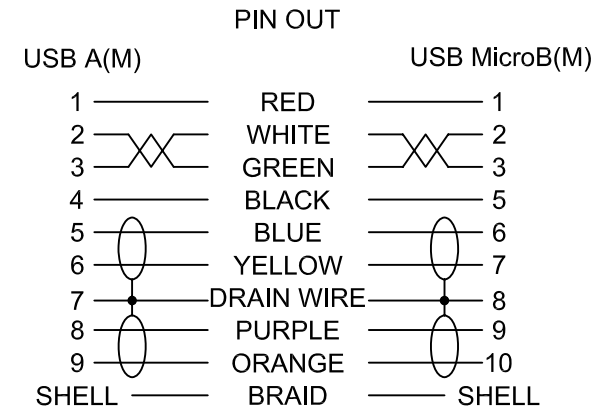
No	MATERIALS LIST:
1.	CABLE:UL20236 (2x(2x28AWG)+2x(2x28AWG)C) OD:7.0mm PUR JACKET COLOR:RED LILAC
2.	CONNECTOR:USB 3.0 A/M, 9P, BLUE INSULATOR SOLDER TYPE, NICKEL PLATED SHELL
3.	CONNECTOR:USB 3.0 MicroB/M, 10P, BLACK INSULATOR SOLDER TYPE, NICKEL PLATED SHELL
4.	ABS ASSEMBLY HOUSING, BLACK COLOR
5.	SCREW:#4x33 M2

PIN OUT		USB A(M)	USB MicroB(M)
1	—	RED	1
2	—	WHITE	2
3	—	GREEN	3
4	—	BLACK	5
5	—	BLUE	6
6	—	YELLOW	7
7	—	DRAIN WIRE	8
8	—	PURPLE	9
9	—	ORANGE	10
	—	SHELL	SHELL

Jargy part no.	Client part no.	Approved	SCALE	UNIT
CBL-HFD3igMBS-xm			1 : 2	mm
Drawing Name		Drawn	Date	REV.
USB 3.0 A to Micro-B Cable M/M		<i>Kevin Hsu</i>	2016/08/17	1.0

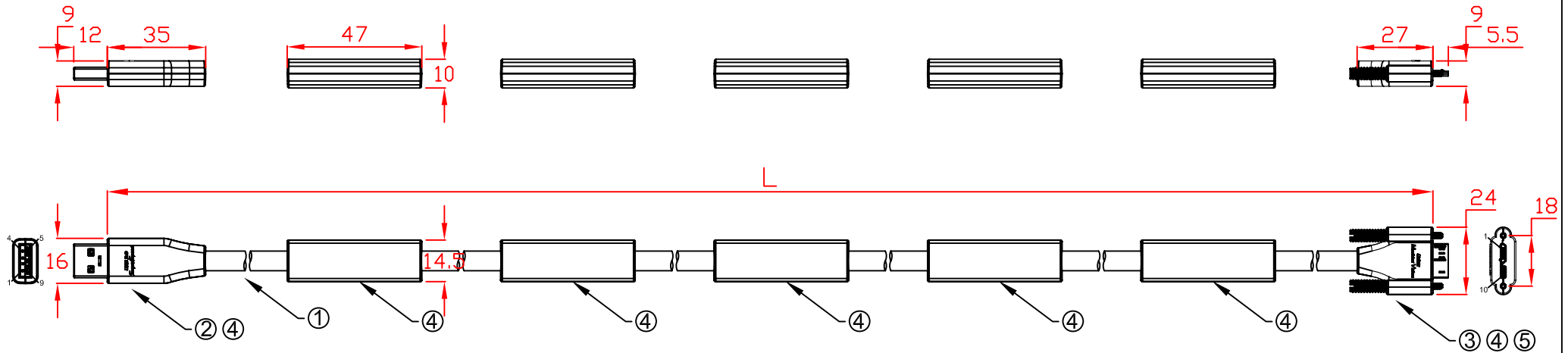


L:
 CBL-HFD3igMBS-16m 16000mm±50mm
 CBL-HFD3igMBS-17m 17000mm±50mm
 CBL-HFD3igMBS-18m 18000mm±50mm
 CBL-HFD3igMBS-19m 19000mm±50mm
 CBL-HFD3igMBS-20m 20000mm±50mm



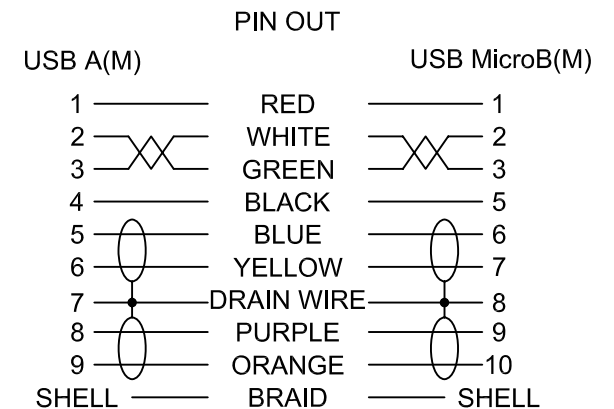
No	MATERIALS LIST:
1.	CABLE:UL20236 (2x(2x28AWG)+2x(2x28AWG)C) OD:7.0mm PUR JACKET COLOR:RED LILAC
2.	CONNECTOR:USB 3.0 A/M, 9P, BLUE INSULATOR SOLDER TYPE, NICKEL PLATED SHELL
3.	CONNECTOR:USB 3.0 MicroB/M, 10P, BLACK INSULATOR SOLDER TYPE, NICKEL PLATED SHELL
4.	ABS ASSEMBLY HOUSING, BLACK COLOR
5.	SCREW:#4x33 M2

Jargy part no.	Client part no.	Approved	SCALE	UNIT
CBL-HFD3igMBS-xm			1 : 2	mm
Drawing Name		Drawn	Date	REV.
USB 3.0 A to Micro-B Cable M/M		<i>Kevin Hsu</i>	2016/06/02	1.0



L:
 CBL-HFD3igMBS-16m 16000mm±50mm
 CBL-HFD3igMBS-17m 17000mm±50mm
 CBL-HFD3igMBS-18m 18000mm±50mm
 CBL-HFD3igMBS-19m 19000mm±50mm
 CBL-HFD3igMBS-20m 20000mm±50mm

No	MATERIALS LIST:
1.	CABLE:UL20236 (2x(2x28AWG)+2x(2x28AWG)C) OD:7.0mm PUR JACKET COLOR:RED LILAC
2.	CONNECTOR:USB 3.0 A/M, 9P, BLUE INSULATOR SOLDER TYPE, NICKEL PLATED SHELL
3.	CONNECTOR:USB 3.0 MicroB/M, 10P, BLACK INSULATOR SOLDER TYPE, NICKEL PLATED SHELL
4.	ABS ASSEMBLY HOUSING, BLACK COLOR
5.	SCREW:#4x33 M2



Jargy part no.	Client part no.	Approved	SCALE	UNIT
CBL-HFD3igMBS-xm			1 : 2	mm
Drawing Name		Drawn	Date	REV.
USB 3.0 A to Micro-B Cable M/M		<i>Kevin Hsu</i>	2016/08/17	1.0